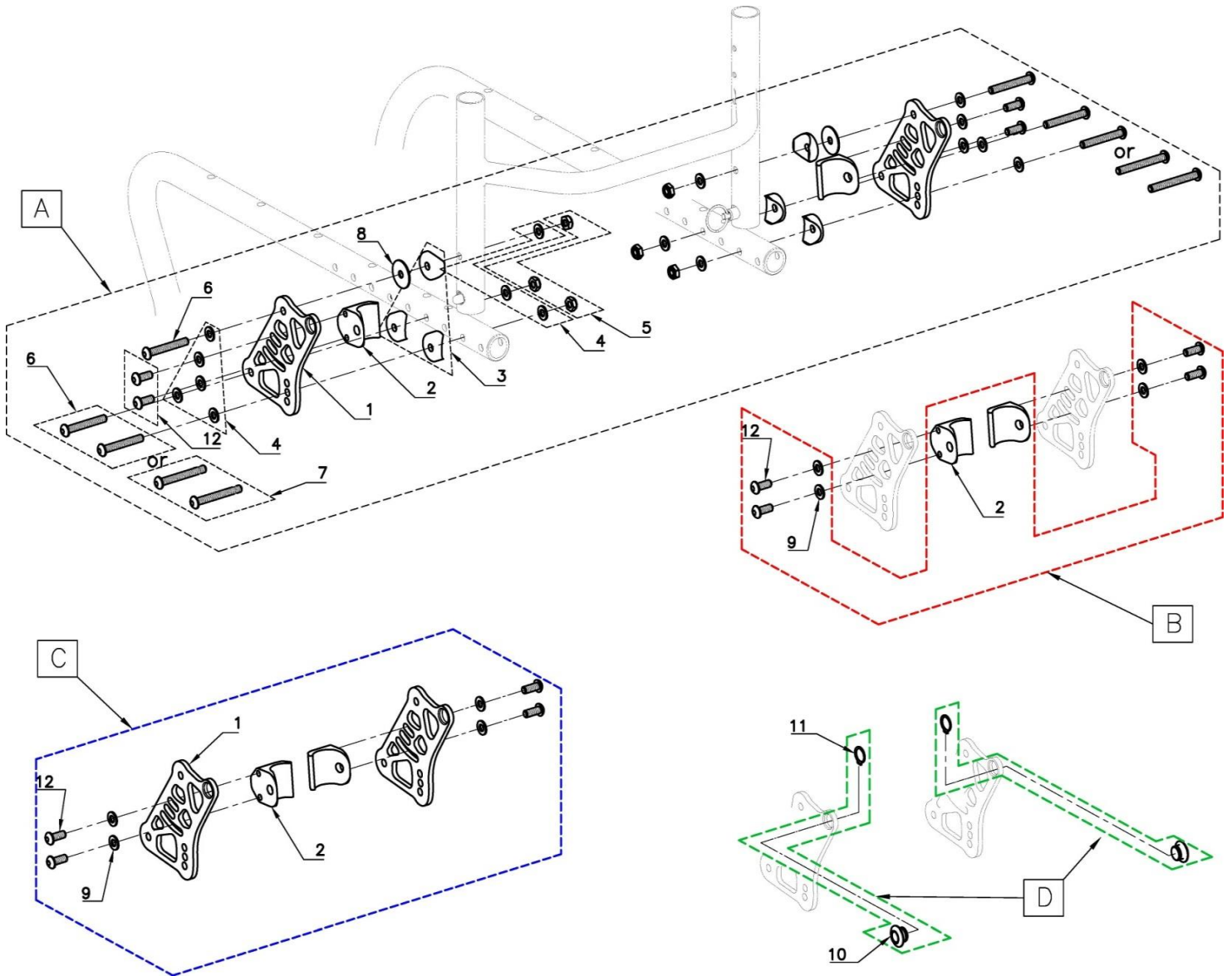


BACKREST BRACKET

**COLOURS**  
IN MOTION

Ver. 1 01/01/23  
Section 2000



POS	Assy #	#	Parts #	QTY	Color	Remark	MSRP	NOTE	POS	Assy #	#	Parts #	QTY	Color	Remark	MSRP	Note
A	2000-01A	1	0460-302	2	Blk	Backrest Brackets	per /set	1set/chair									
		2	0476-125	2	Blk	Saddle Stops											
		3	0079-300	6	Blk	Plastic Saddle											
		4	0277-300	16	Sil	1/4" Washer											
		5	0110-300	6	Sil	1/4"-20 Nylon HLN											
		6	0112-300	6	Sil	1/4"-20 L:1 3/4" BHCS											
		7	0112-301	4	Sil	1/4"-20 L:2" BHCS											
		8	0259-300	2	Sil	OD1"-ID1/4" Washer											
B	2000-01B	2	0476-125	2	Blk	Saddle Stops	per set	1set/chair									
		9	0277-300	4	Sil	1/4" Washer											
		12	0541-306	4	Sil	1/4"-20 L:1/2" BHCS											
C	2000-01C	1	0460-302	2	Blk	Backrest Brackets	per set	1set/chair									
		2	0476-125	2	Blk	Saddle Stops											
		9	0277-300	4	Sil	1/4" Washer											
		12	0541-306	4	Sil	1/4"-20 L:1/2" BHCS											
D	2000-01D	10	0478-105	2	Blk	for Double Locking	per set	1set/chair									
		11	0274-301	2	Sil												